



# Calendar 2021

Erasmus+ 2020-2022

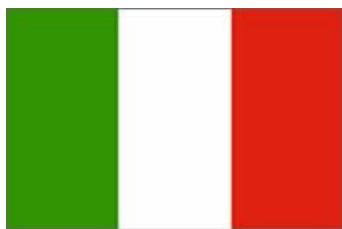
## How Roman are you?



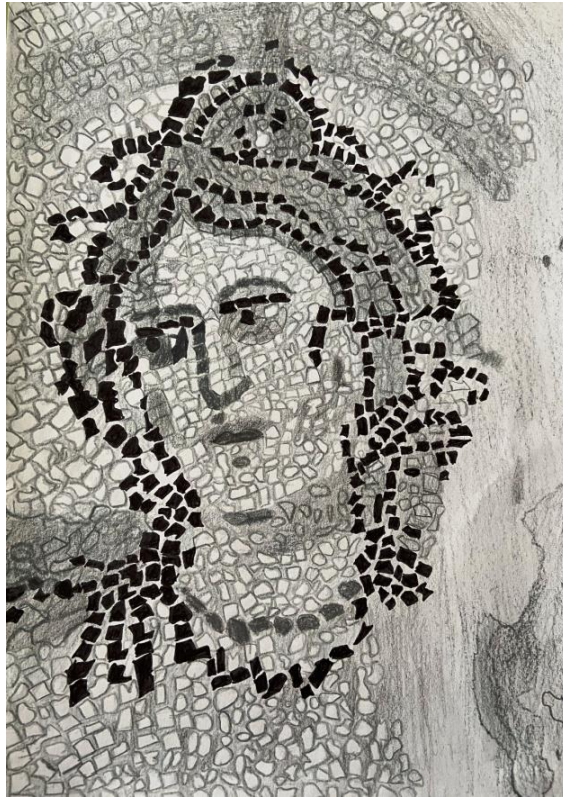
Erasmus+



Co-funded by the  
Erasmus+ Programme  
of the European Union



# JANUARY



SPAIN: Roman mosaic from the village of Salar

MONDAY	TUESDAY	WEDNESDAY	THURSDAY	FRIDAY	SATURDAY	SUNDAY
				<b>1</b> NEW YEAR	<b>2</b>	<b>3</b>
<b>4</b>	<b>5</b>	<b>6</b>	<b>7</b>	<b>8</b>	<b>9</b>	<b>10</b>
<b>11</b>	<b>12</b>	<b>13</b>	<b>14</b>	<b>15</b>	<b>16</b>	<b>17</b>
<b>18</b>	<b>19</b>	<b>20</b>	<b>21</b>	<b>22</b>	<b>23</b>	<b>24</b>
<b>25</b>	<b>26</b>	<b>27</b>	<b>28</b>	<b>29</b>	<b>30</b>	<b>31</b>

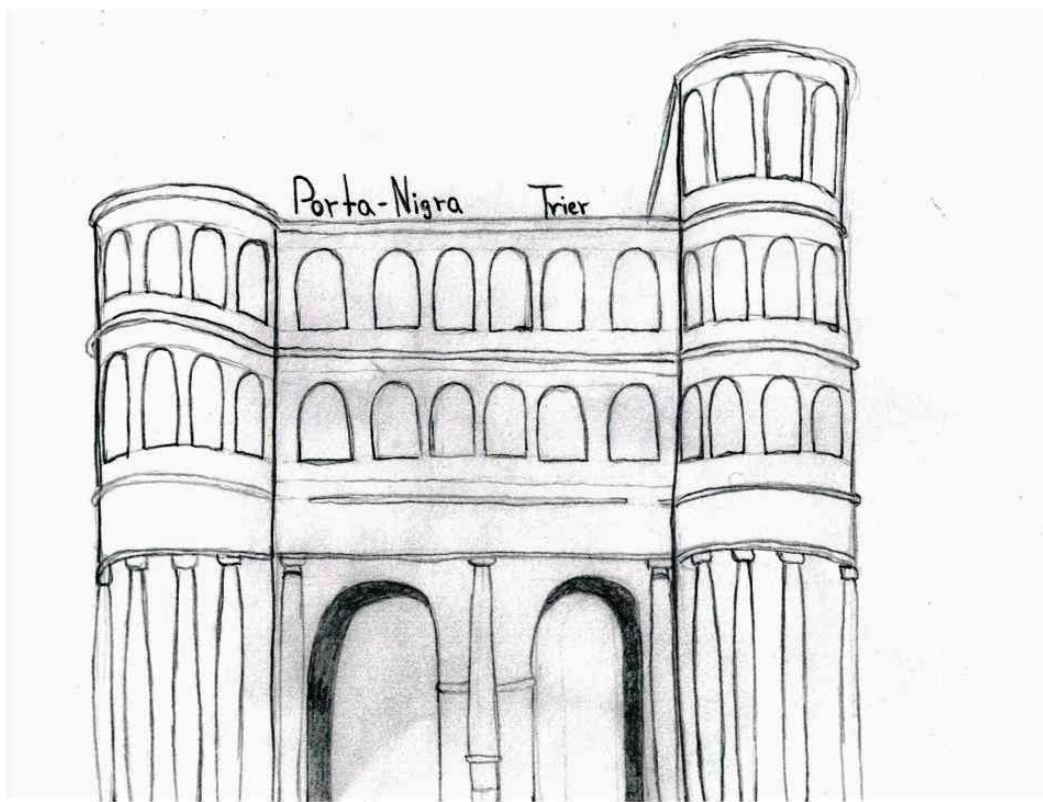
# FEBRUARY



CROATIA: a coin with the image of emperor Valentinian, 4th century A.D.

MONDAY	TUESDAY	WEDNESDAY	THURSDAY	FRIDAY	SATURDAY	SUNDAY
1	2	3	4	5	6	7
8	9	10	11	12	13	14
15	16	17	18	19	20	21
22	23	24	25	26	27	28
<b>Notes:</b>						

# MARCH



GERMANY: Porta Nigra, Trier, 2nd century A.D.

MONDAY	TUESDAY	WEDNESDAY	THURSDAY	FRIDAY	SATURDAY	SUNDAY
1	2	3	4	5	6	7
8	9	10	11	12	13	14
15	16	17	18	19	20	21
22	23	24	25	26	27	28
29	30	31	Notes:			

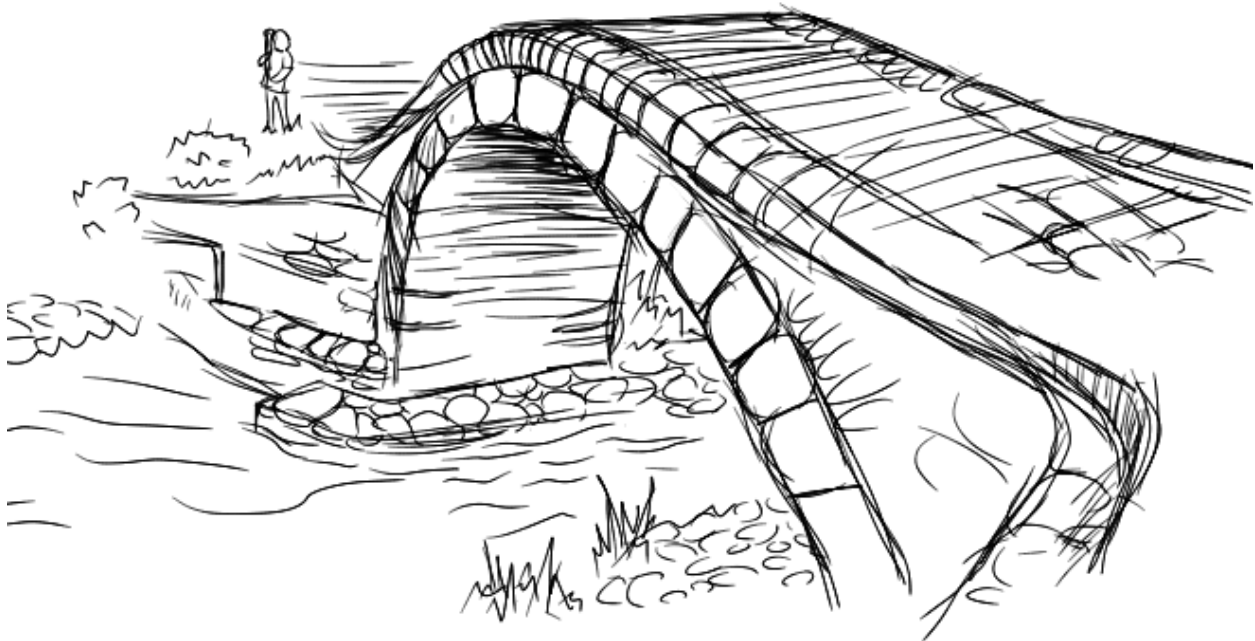
# APRIL



ROMAN BRIDGE OF PONTE DE LIMA-PORTUGAL

MONDAY	TUESDAY	WEDNESDAY	THURSDAY	FRIDAY	SATURDAY	SUNDAY
			1	2 GOOD FRIDAY	3	4 EASTER SUNDAY
5 EASTER MONDAY	6	7	8	9	10	11
12	13	14	15	16	17	18
19	20	21	22	23	24	25
26	27	28	29	30	Notes:	

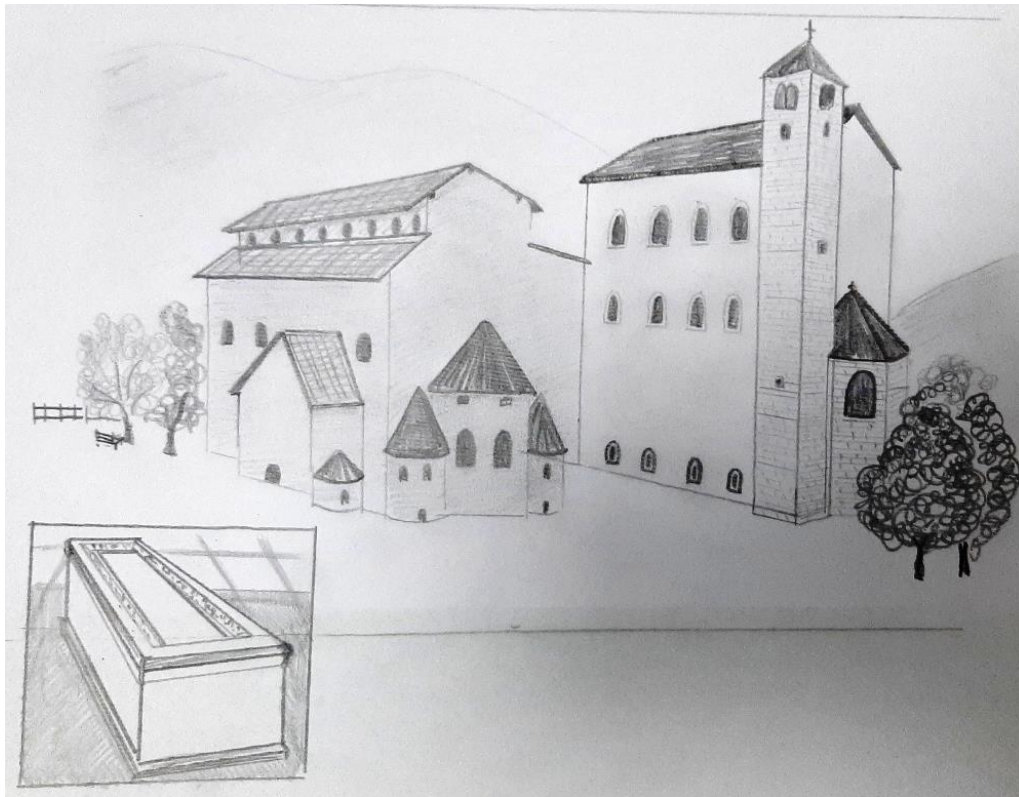
# MAY



GREECE: a Roman bridge

MONDAY	TUESDAY	WEDNESDAY	THURSDAY	FRIDAY	SATURDAY	SUNDAY
					<b>1</b> LABOR DAY	<b>2</b>
<b>3</b>	<b>4</b>	<b>5</b>	<b>6</b>	<b>7</b>	<b>8</b>	<b>9</b>
<b>10</b>	<b>11</b>	<b>12</b>	<b>13</b> ASCENSION DAY	<b>14</b>	<b>15</b>	<b>16</b>
<b>17</b>	<b>18</b>	<b>19</b>	<b>20</b>	<b>21</b>	<b>22</b>	<b>23</b> PENTECOST
<b>24/31</b> PENTECOST	<b>25</b>	<b>26</b>	<b>27</b>	<b>28</b>	<b>29</b>	<b>30</b>

# JUNE



ITALY: St.Vigil's marble tombstone inside the early Christian cathedral

MONDAY	TUESDAY	WEDNESDAY	THURSDAY	FRIDAY	SATURDAY	SUNDAY
	1	2	3	4	5	6
7	8	9	10	11	12	13
14	15	16	17	18	19	20
21	22	23	24	25	26	27
28	19	30	Notes:			

# JULY



SPAIN: decorative elements and Venus' statue in the village of Salar

MONDAY	TUESDAY	WEDNESDAY	THURSDAY	FRIDAY	SATURDAY	SUNDAY
			1	2	3	4
5	6	7	8	9	10	11
12	13	14	15	16	17	18
19	20	21	22	23	24	25
26	27	28	29	30	31	



# AUGUST



CROATIA: a Roman soldier's fibula, 3rd/4th century A.D.

MONDAY	TUESDAY	WEDNESDAY	THURSDAY	FRIDAY	SATURDAY	SUNDAY	
						1	
2	3	4	5	6	7	8	
9	10	11	12	13	14	15	
16	17	18	19	20	21	22	
23	24	25	26	27	28	29	
30	31	Notes:					

# SEPTEMBER



Germany: Theatre mask, 1st century B.C.

MONDAY	TUESDAY	WEDNESDAY	THURSDAY	FRIDAY	SATURDAY	SUNDAY
		1	2	3	4	5
6	7	8	9	10	11	12
13	14	15	16	17	18	19
20	21	22	23	24	25	26
27	28	29	30	Notes:		

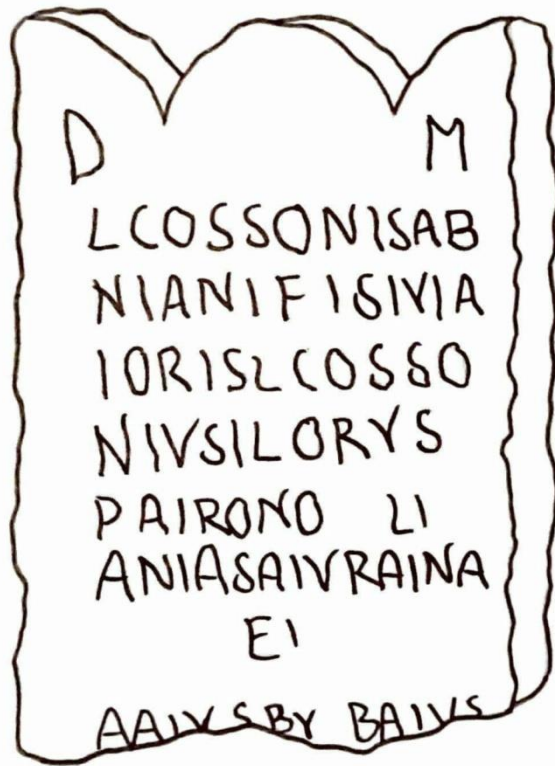
# OCTOBER



RUINS OF CONIMBRIGA - PORTUGAL

MONDAY	TUESDAY	WEDNESDAY	THURSDAY	FRIDAY	SATURDAY	SUNDAY
				1	2	3 GERMAN REUNIFICATION DAY
4	5	6	7	8	9	10
11	12	13	14	15	16	17
18	19	20	21	22	23	24
25	26	27	28	29	30	31 REFORMATION DAY

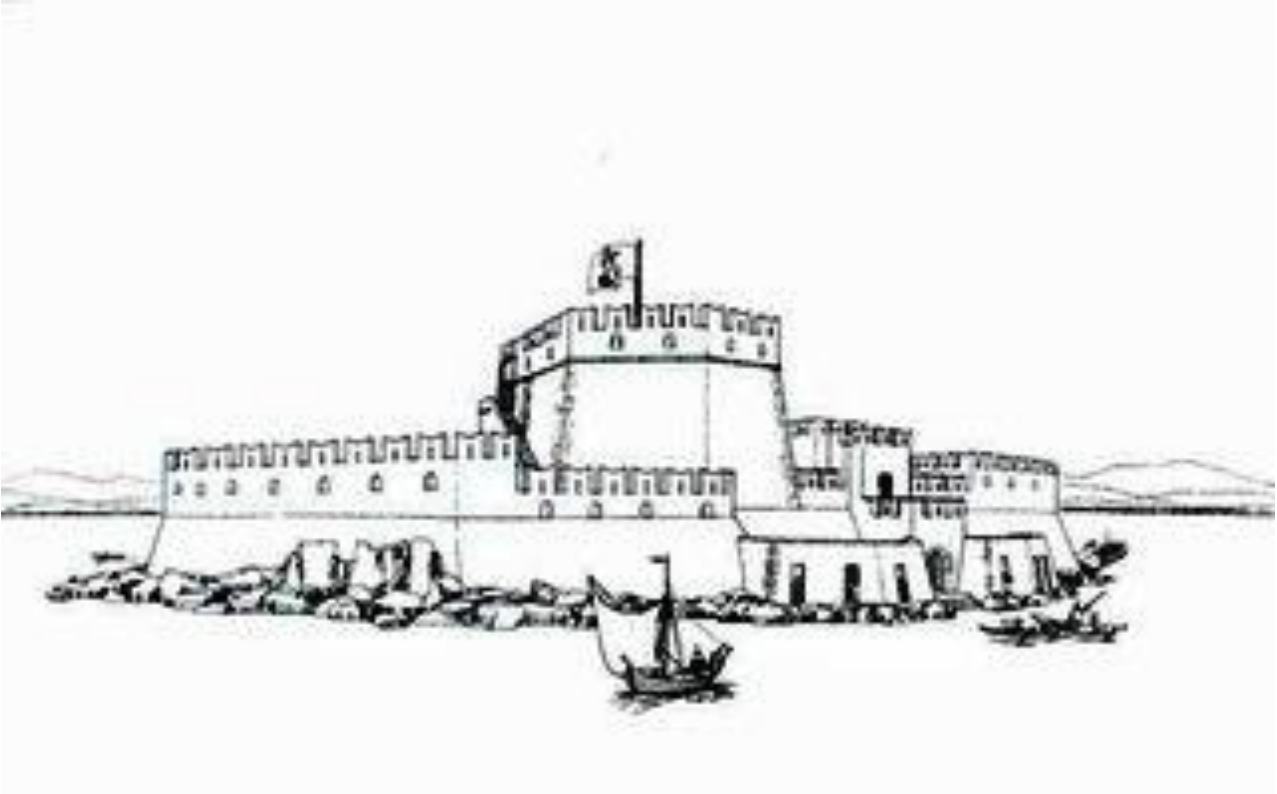
# NOVEMBER



ITALY: Roman epigraph, Buonconsiglio Castle Museum, Trento

MONDAY	TUESDAY	WEDNESDAY	THURSDAY	FRIDAY	SATURDAY	SUNDAY
1	2	3	4	5	6	7
8	9	10	11	12	13	14
15	16	17	18	19	20	21
22	23	24	25	26	27	28
29	30	Notes:				

# DECEMBER



GREECE: a fortress

MONDAY	TUESDAY	WEDNESDAY	THURSDAY	FRIDAY	SATURDAY	SUNDAY
		1	2	3	4	5
6	7	8	9	10	11	12
13	14	15	16	17	18	19
20	21	22	23	24	25 BOXING DAY	26 CHRISTMAS DAY
27	28	29	30	31 NEW YEARS EVE	Notes:	

**Schools:**

- Integrierte Gesamtschule Lüneburg, **Germany**
- Colegio Ntra. Sra. de las Mercedes, **Spain**
- 4th Gymnasium Volos, **Greece**
- Agrupamento de Escolas Rosa Ramalho, **Portugal**
- Istituto Tecnico Tecnologico G. Marconi, **Italy**
- Osnovna skola Bartola Kašića, **Croatia**

**Disclaimer:**

This project has been funded with support from the European Commission.

This publication reflects the views only of the author, and the Commission cannot be held responsible for any use which may be made of the information contained therein.